

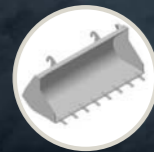


the right choice

# MST

**Санкар**  
www.sankar.ru +7 (495) 771 22 24

### Attachments



1 m³ bucket with teeth



1 m³ bucket without teeth



2.5 m³ bucket for light materials



2 m³ bucket for light materials



Bale Clamp



Palette Forks



Basket



1 m³ bucket without teeth (in lesser width than wheels)

Specifications in this catalogue are subject to change without prior notice for quality enhancement.

①

**SANKO MAKİNA PAZARLAMA VE TİCARET A.Ş.**

www.mst-tr.com e-mail: export@mst-tr.com

**HEAD OFFICE**

Yakacık, Hürriyet Mah. E5 Yan Yol Üzeri No: 57 Kartal İstanbul TURKEY Tel: +90 216 453 04 00 pbx Fax: +90 216 453 04 01

**FACTORY**

4. Organize Sanayi Bölgesi Başpınar Gaziantep TURKEY Tel: +90 342 357 00 33 Fax: +90 342 357 00 44-32



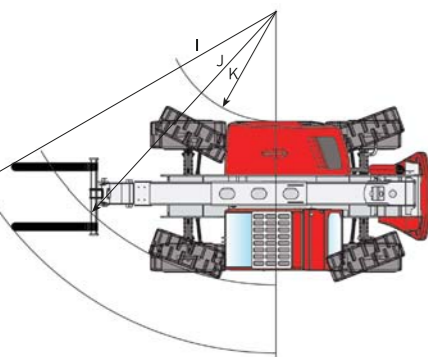
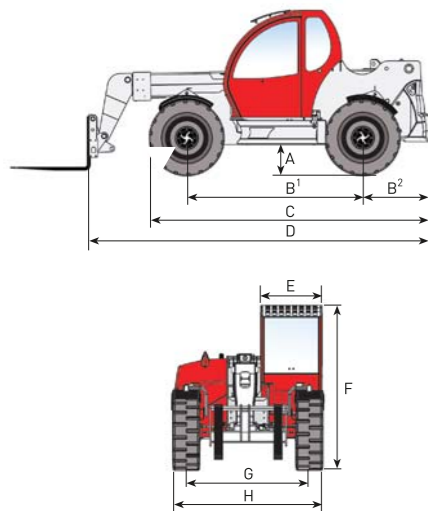
**MST**  
TELEHANDLER



**SANKO** | www.mst-tr.com

D01ET 04.11(R1)

## MST ST 7.40



SIZES	ST7.40	ST8.35	ST9.40
A	320	320	460
B <sup>1</sup>	2700	2700	2750
B <sup>2</sup>	790	790	1050
C	4000	4000	4400
D	4530	5230	5370
E	950	950	950
F	2100	2100	2540
G	1655	1655	1920
H	2070	2070	2345
I	4800	5400	5369
J	4000	4000	4300
K	1700	1700	1745

Sizes mm type.

**MST**

ENGINE	
Engine	PERKINS 1104C-44T
Max. Power	75 Kw (100 HP) 2200 rpm
Type	Four stroke, diesel engine
Cylinder number and layout	4 cylinder, in line
Displacement	4490 cm <sup>3</sup>
Cooling system	Water

PERFORMANCE	
Max. lifting capacity	4,000 kg
Max. lifting capacity at max. reach	3,200 kg
Capacity at max. boom extension	1000 kg
Max. lifting height	6,35 m
Max. horizontal boom extension	3,30 m
Distance between the load center and front axle at max. Height	0,40 m
Tilt angle	120°
Digging force	4,550 daN
Traction force	8,100 daN
Gradeability	740
Machine weight (empty)	7,300 kg
Max. speed	40 km/h

TRANSMISSION	
Transmission	Axial piston variable displacement hydrostatic pump
Hydraulic motor	Axial piston variable displacement motor
Reversing gear	Electro-hydraulic inching pedal for controlled forward movement, servo controlled two speed gear box

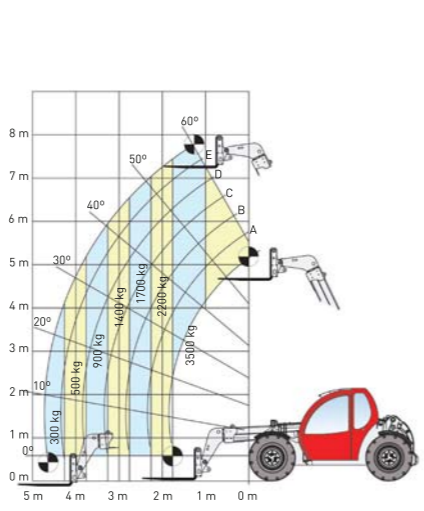
DIFFERENTIAL - AXLES	
Axles	2
Driving mode	4WS/Crab steer/ 2WS
Front Axle	Rigid
Rear Axle	Oscillating
Service Brake	Oil bath on the 4 wheels with double hydraulic system and servo brake
Park Brake	Negative parking brake

HYDRAULIC SYSTEM	
Pump Capacity	100lt/1'
Max. working pressure	230 bar
Control valve with joystick	3 in 1

CAPACITIES	
Hydraulic tank	90
Fuel tank	60

TYRES	
Tyres	405/70R20 (16,0/70-20)

## MST ST 8.35



ENGINE	
Engine	PERKINS 1104C-44T
Max. Power	75 Kw (100 HP) 2200 rpm
Type	Four stroke, diesel engine
Cylinder number and layout	4 cylinder, in line
Displacement	4490 cm <sup>3</sup>
Cooling system	Water

PERFORMANCE	
Max. lifting capacity	3,500 kg
Max. lifting capacity at max. reach	3,000 kg
Capacity at max. boom extension	300 kg
Max. lifting height	7,80 m
Max. horizontal boom extension	4,60 m
Distance between the load center and front axle at max. Height	1,50 m
Tilt angle	120°
Digging force	4,550 daN
Traction force	8,020 daN
Gradeability	740
Machine weight (empty)	7,750 kg
Max. speed	40 km/h

TRANSMISSION	
Transmission	Axial piston variable displacement hydrostatic pump
Hydraulic motor	Axial piston variable displacement motor
Reversing gear	Electro-hydraulic inching pedal for controlled forward movement, servo controlled two speed gear box

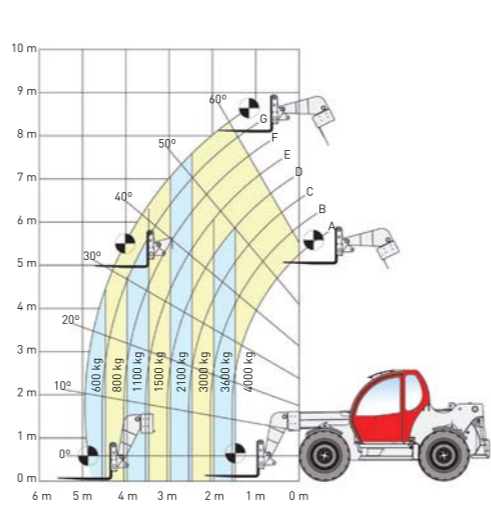
DIFFERENTIAL - AXLES	
Axles	2
Driving mode	4WS/Crab steer/ 2WS
Front Axle	Rigid
Rear Axle	Oscillating
Service Brake	Oil bath on the 4 wheels with double hydraulic system and servo brake
Park Brake	Negative parking brake

HYDRAULIC SYSTEM	
Pump Capacity	100lt/1'
Max. working pressure	230 bar
Control valve with joystick	3 in 1

CAPACITIES	
Hydraulic tank	90
Fuel tank	60

TYRES	
Tyres	405/70R20 (16,0/70-20)

## MST ST 9.40



ENGINE	
Engine	PERKINS 1104C-44T
Max. Power	75 Kw (100 HP) 2200 rpm
Type	Four stroke, diesel engine
Cylinder number and layout	4 cylinder, in line
Displacement	4490 cm <sup>3</sup>
Cooling system	Water

PERFORMANCE	
Max. lifting capacity	4,000 kg
Max. lifting capacity at max. reach	3,000 kg
Capacity at max. boom extension	600 kg
Max. lifting height	8,70 m
Max. horizontal boom extension	4,90 m
Distance between the load center and front axle at max. Height	1,20 m
Tilt angle	135°
Digging force	4,550 daN
Traction force	9,970 daN
Gradeability	740
Machine weight (empty)	9,980 kg
Max. speed	30 km/h

TRANSMISSION	
Transmission	Axial piston variable displacement hydrostatic pump
Hydraulic motor	Axial piston variable displacement motor
Reversing gear	Electro-hydraulic inching pedal for controlled forward movement, servo controlled two speed gear box

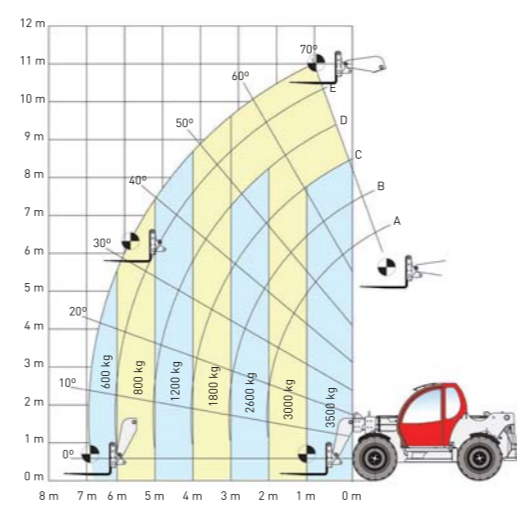
DIFFERENTIAL - AXLES	
Axles	2
Driving mode	4WS/Crab steer/ 2WS
Front Axle	Rigid
Rear Axle	Oscillating
Service Brake	Oil bath on the 4 wheels with double hydraulic system and servo brake
Park Brake	Negative parking brake

HYDRAULIC SYSTEM	
Pump Capacity	100lt/1'
Max. working pressure	230 bar
Control valve with joystick	3 in 1

CAPACITIES	
Hydraulic tank	150
Fuel tank	120

TYRES	
Tyres	405/70R24 (16,0/70-24)

## MST ST 11.35



ENGINE	
Engine	PERKINS 1104C-44T
Max. Power	75 Kw (100 HP) 2200 rpm
Type	Four stroke, diesel engine
Cylinder number and layout	4 cylinder, in line
Displacement	4490 cm <sup>3</sup>
Cooling system	Water

PERFORMANCE	
Max. lifting capacity	3,500 kg
Max. lifting capacity at max. reach	2,600 kg
Capacity at max. boom extension	200 kg
Max. lifting height	11,00 m
Max. horizontal boom extension	6,90 m
Distance between the load center and front axle at max. Height	0,80 m
Tilt angle	135°
Digging force	4,550 daN
Traction force	10,500 daN
Gradeability	740
Machine weight (empty)	10,380 kg
Max. speed	30 km/h

TRANSMISSION	
Transmission	Axial piston variable displacement hydrostatic pump
Hydraulic motor	Axial piston variable displacement motor
Reversing gear	Electro-hydraulic inching pedal for controlled forward movement, servo controlled two speed gear box

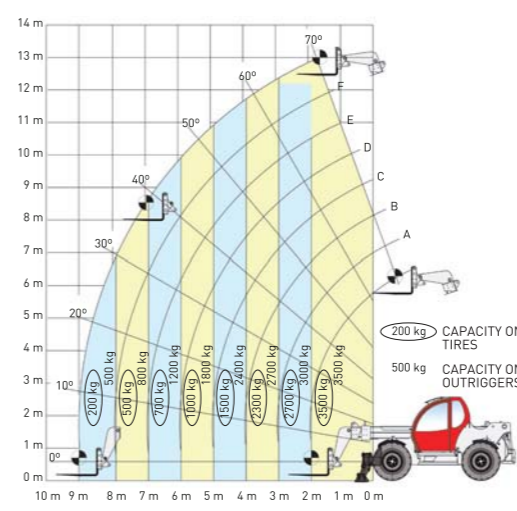
DIFFERENTIAL - AXLES	
Axles	2
Driving mode	4WS/Crab steer/ 2WS
Front Axle	Rigid
Rear Axle	Oscillating
Service Brake	Oil bath on the 4 wheels with double hydraulic system and servo brake
Park Brake	Negative parking brake

HYDRAULIC SYSTEM	
Pump Capacity	100lt/1'
Max. working pressure	230 bar
Control valve with joystick	4 in 1

CAPACITIES	
Hydraulic tank	150
Fuel tank	120

TYRES	
Tyres	405/70R24 (16,0/70-24)

## MST ST 13.35



ENGINE	
Engine	PERKINS 1104C-44T
Max. Power	75 Kw (100 HP) 2200 rpm
Type	Four stroke, diesel engine
Cylinder number and layout	4 cylinder, in line
Displacement	4490 cm <sup>3</sup>
Cooling system	Water

PERFORMANCE	
Max. lifting capacity	3,500 kg
Max. lifting capacity at max. reach	2,700 kg
Capacity at max. boom extension	200 kg
Max. lifting height	13,00 m
Max. horizontal boom extension	9,00 m
Distance between the load center and front axle at max. Height	1,70 m
Tilt angle	135°
Digging force	4,550 daN
Traction force	10,500 daN
Gradeability	740
Machine weight (empty)	11,200 kg
Max. speed	30 km/h

TRANSMISSION	
Transmission	Axial piston variable displacement hydrostatic pump
Hydraulic motor	Axial piston variable displacement motor
Reversing gear	Electro-hydraulic inching pedal for controlled forward movement, servo controlled two speed gear box

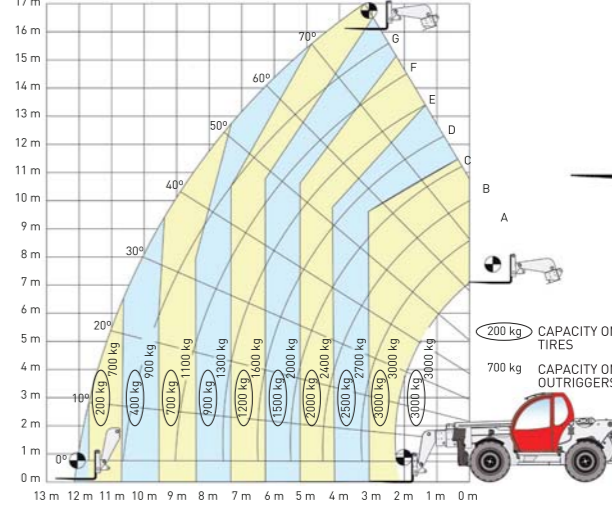
DIFFERENTIAL - AXLES	
Axles	2
Driving mode	4WS/Crab steer/ 2WS
Front Axle	Rigid
Rear Axle	Oscillating
Service Brake	Oil bath on the 4 wheels with double hydraulic system and servo brake
Park Brake	Negative parking brake

HYDRAULIC SYSTEM	
Pump Capacity	100lt/1'
Max. working pressure	230 bar
Control valve with joystick	4 in 1

CAPACITIES	
Hydraulic tank	150
Fuel tank	120

TYRES	
Tyres	405/70R24 (16,0/70-24)

## MST ST 17.30



ENGINE	
Engine	PERKINS 1104C-44T
Max. Power	75 Kw (100 HP) 2200 rpm
Type	Four stroke, diesel engine
Cylinder number and layout	4 cylinder, in line
Displacement	4490 cm <sup>3</sup>
Cooling system	Water

PERFORMANCE	
Max. lifting capacity	3,000 kg
Max. lifting capacity at max. reach	1,200 kg
Capacity at max. boom extension	700 kg
Max. lifting height	16,30 m
Max. horizontal boom extension	12,30 m
Distance between the load center and front axle at max. Height	3,00 m
Tilt angle	135°
Digging force	4,550 daN
Traction force	10,850 daN
Gradeability	740
Machine weight (empty)	12,220 kg
Max. speed	30 km/h

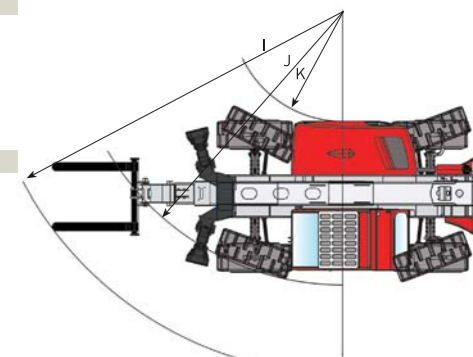
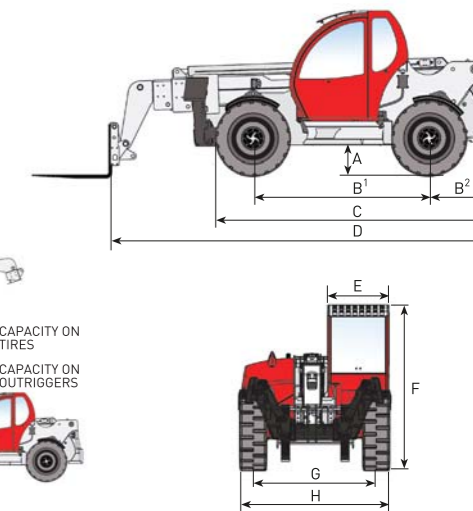
TRANSMISSION	
Transmission	Axial piston variable displacement hydrostatic pump
Hydraulic motor	Axial piston variable displacement motor
Reversing gear	Electro-hydraulic inching pedal for controlled forward movement, servo controlled two speed gear box

DIFFERENTIAL - AXLES	
Axles	2
Driving mode	4WS/Crab steer/ 2WS
Front Axle	Rigid
Rear Axle	Oscillating
Service Brake	Oil bath on the 4 wheels with double hydraulic system and servo brake
Park Brake	Negative parking brake

HYDRAULIC SYSTEM	
Pump Capacity	100lt/1'
Max. working pressure	230 bar
Control valve with joystick	4 in 1

CAPACITIES	
Hydraulic tank	150
Fuel tank	120

TYRES	
Tyres	405/70R24 (16,0/70-24)



SIZES	ST11.35	ST13.35	ST17.30
A	460	460	460
B <sup>1</sup>	2750	2750	2750
B <sup>2</sup>	1050	1050	1050
C	4400	4400	4400
D	5050	5795	6200
E	950	950	950
F	2540	2540	2540
G	1920	1920	1920
H	2345	2345	2345
I	5180	5694	5694
J	4300	4300	4300
K	1745	1745	1745

Sizes mm type.

**MST**